

ProTeus IV

The CMMS Technology Leader

ProTeus Product Overview

Eagle Technology, Inc. provides CMMS products to meet the needs of a variety of customers in facilities and manufacturing environments. Our ProTeus family of products is available in three versions to meet the needs of small, medium and large enterprises, with a number of optional modules available to add functionality.

ProTeus IV Expert

is an outstanding tool for smaller companies needing one to four concurrent CMMS users. ProTeus IV Expert includes a Microsoft MSDE database, and provides a full complement of features including work order scheduling, preventive and demand maintenance templates, equipment and inventory tracking, vendor module, purchasing module, and over 70 reports.

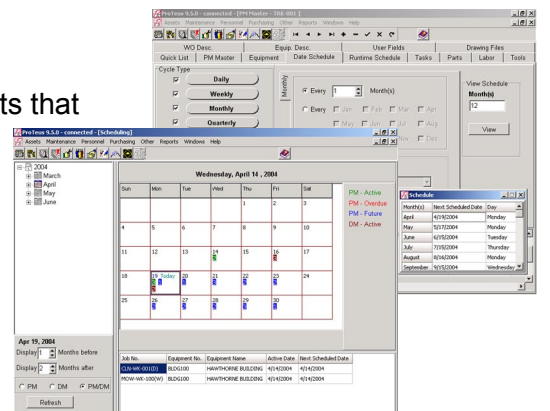


ProTeus IV Professional

is designed for larger operations needing up to eight concurrent CMMS users. It includes a Microsoft MSDE database and has all the features of the ProTeus IV Expert, plus advanced work order functionality, improved inventory control, expanded budgeting and administrative tools, and over 100 reports and graphs. Optional modules further enhance functionality by providing barcode and PDA capabilities, web-based service request, and automated work order generation from control systems via the unique ProTeus Alarm Interface.

ProTeus IV Enterprise

is specially designed for large multi-site environments that have a large amount of data to track. A full featured Enterprise Asset Management System, ProTeus IV Enterprise supports networks using either a MS SQL Server or Oracle database, and supports an unlimited number of users. In addition to all the features of the ProTeus Professional, this robust system offers an Audit Trail, ERP interface and multi-site management capabilities.



Eagle

Technology

Eagle Technology, Inc.

10500 N. Port Washington Road

Mequon, WI 53092 USA

1-800-388-3268 1-262-241-3845

E-mail: sales@eaglecmms.com

Web: www.eaglecmms.com

©2004 Eagle Technology, Inc. All rights reserved. Eagle Technology has a policy of continuous product improvement, it reserves the right to change specifications and design without notice.

Features	ProTeus IV Expert	ProTeus IV Professional	ProTeus IV Enterprise
Maximum number of concurrent CMMS users	1-4	1-8	Unlimited
Multi-cycle preventive maintenance work orders for increased efficiency	•	•	•
Customizable dashboard with Key Performance Indicators (KPI)	•	•	•
Standard reports	•	•	•
User selectable screen layout (column positioning)	•	•	•
Resource allocation and equipment scheduling		•	•
Drawing files attached to equipment, inventory and work order records.		•	•
Budget vs. actual cost tracking for multiple cost centers		•	•
E-mail work orders		•	•
Time card module for quick labor updates		•	•
Enhanced reports and graphs		•	•
Alarm interface to BAS for automatic generation of work orders (BACnet and other proprietary protocols)		o	o
Preventive maintenance work orders scheduled by date, day of week, or usage	•	•	•
Demand maintenance templates for fast response to common tasks	•	•	•
Assign multiple pieces of equipment on single work order		•	•
Work order and purchase order approvals		•	•
Batch print/close work orders	•	•	•
Equipment module with cost history, warranty, vendor, technical documentation, etc.	•	•	•
Inventory module with vendors, costs, reorder quantities, stock location, MSDS	•	•	•
Multiple inventory stockrooms		•	•
Employee module with labor craft and rates	•	•	•
Vendor module with contact information, parts purchased, purchasing history	•	•	•
Purchasing module for creating purchase requisitions and purchase orders, tracking shipments and receipts	•	•	•
Customer, asset group or tenant tracking	•	•	•
Historical data archive and purge		•	•
Individual and group security rights, permissions	•	•	•
Data Import utility for rapid implementation		•	•
User editable field names		•	•
Customized reports using Crystal Reports®	o	o	o
Multiple currency management		•	•
Multiple language support (English, Spanish, German, Portuguese, Hungarian, Simplified Chinese, Traditional Chinese)	•	•	•
Multiple database support		o	o
Multi-site management			o
Barcode interface		o	o
Service Request module, standard and web-based.		o	o
PDA interface		o	o
HVAC equipment PM database		o	o
MS Project interface		o	o
Audit trail for FDA validation or ISO-9000 requirements			o
Enterprise Resource Planning Interface (ERP) for accounting systems			o

- - Standard feature
- o - Optional module



Eagle Technology, Inc.

10500 N. Port Washington Road • Mequon, Wisconsin 53092 • USA

Tel: 1-262-241-3845 • Toll-Free: 1-800-388-3268 • Fax: 1-262-241-5248 • Email: sales@eaglecmms.com • Web: www.eaglecmms.com