

# ProTeus IV

*The CMMS Technology Leader*

*for Manufacturing*

Within the manufacturing industry, asset performance is critical. Failure to maintain these assets results in decreased productivity and excessive downtime. Downtime is often the single biggest issue that impacts a plant's bottom line. Good preventive maintenance can often reduce the amount of downtime, reduce maintenance-related costs, and ultimately, improve the efficiency of your plant.

ProTeus IV for Manufacturing helps meet these goals, all while extending asset and equipment life. To achieve this, ProTeus IV offers the following set of features and capabilities:

## **Extend Asset Life**

Extend the life of your plant's critical assets through the ProTeus IV preventive maintenance program.

## **Improve Plant Productivity**

Improve plant production by minimizing maintenance-related downtime and turn-around time.

## **Respond to Emergencies**

Shorten downtimes when you use ProTeus IV work order templates to quickly respond to emergencies and unplanned maintenance.

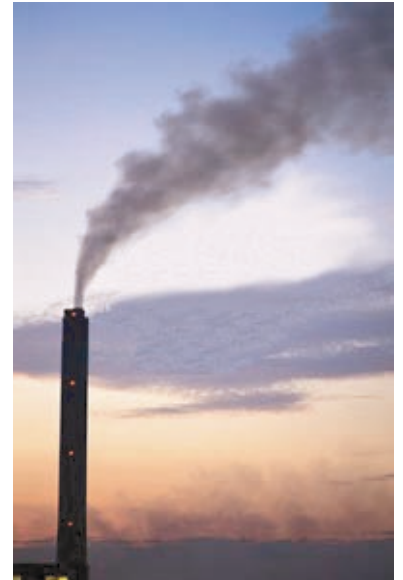
## **Analyze your Assets**

ProTeus IV helps you determine the value of your assets, the reasons why assets fail, the costs to operate assets, and where each asset is located.



## **Optimize Inventory Procurement**

Reduce inventory holding and material costs, eliminate stock outages, and achieve better supplier pricing while making your purchasing process more efficient.



Prevent overtime and lag time and create a more effective, efficient maintenance workforce. Schedule maintenance for optimal use of labor by craft.

ProTeus IV reports include such information as asset performance, cost history, equipment downtime and labor costs.

Eagle offers many tools to assist in tracking and managing safety, compliance and regulatory data related to assets, maintenance, and inventory.

Track costs on repairs, materials, parts, tooling and labor by region, location, department or individual equipment.

Track ISO-9000, QS-9000, EPA, OSHA and FDA requirements, including maintenance crew certifications and training, inspections, audits and more.

Reduce IT costs associated with maintaining asset management and maintenance systems with Eagle Technology's hosted services.

Eagle Technology offers the most complete solution for managing the assets at your plant, helping manufacturing companies maximize the value of their investments and increase profitability. Contact us at 1-800-388-3268 or email [sales@eaglecmms.com](mailto:sales@eaglecmms.com) for more information.

- Increased equipment availability
- Paperless work order processing
- Decrease in paperwork
- Decreased operating costs
- Increased maintenance staff productivity
- Reduction in inventory investment
- Improved documentation
- Improved accessibility to information
- Improved cost history tracking
- Reduced equipment downtime
- Extended equipment life
- Easier compliance with regulatory requirements
- Simplified maintenance data reporting
- Seamless exchange of data with Accounting systems and Enterprise Resource Planning (ERP) systems



10500 N. Port Washington Road · Mequon · Wisconsin · 53092 · USA  
Tel: 1-262-241-3845 · Toll-Free: 1-800-388-3268 · Fax: 1-262-241-5248  
Email: [sales@eaglecmms.com](mailto:sales@eaglecmms.com) · Web: [www.eaglecmms.com](http://www.eaglecmms.com)

...for the best in maintenance management software!