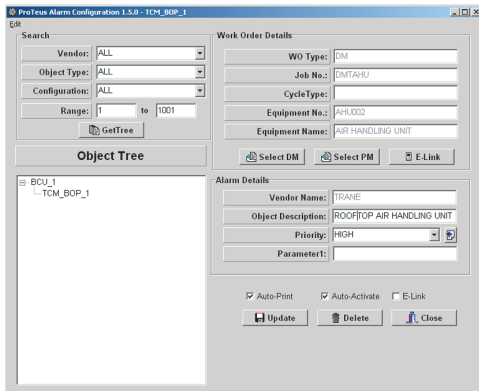


ProTeus IV

The CMMS Technology Leader

ProTeus Alarm Interface

With the ever-increasing complexity associated with today's automated buildings, the breakdown of critical systems is an increased risk to building management. Eagle Technology has developed an Alarm Interface to address this problem. ProTeus Alarm Interface (PAI) is the first of its kind in the CMMS industry and provides continuous alarm vigilance with direct interface to most Building Automation Systems (BAS), supporting such popular standards as BACnet®.



The user-friendly interface provides a simple means to associate an alarm, event or equipment runtime with a specific work order defining tasks and parts required. User options such as auto-activate and auto-print further enhance response times. PAI also provides the capability for automated email messaging or paging to immediately inform technicians of alarm status and actions.

The values added with PAI are numerous. The most significant is the reduction of labor cost, which is a direct result of real time monitoring and action in association with automated work order generation.

Supported Vendors

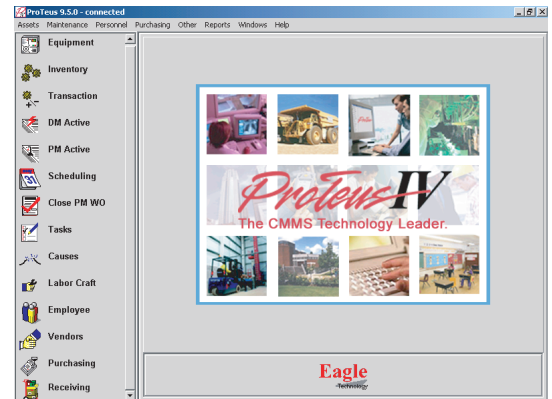
Since PAI is a BACnet compliant device, any vendors meeting the requirements (on back) can use PAI. However, compatibility testing is recommended to verify vendor compliant devices. The following list of vendors is currently supported.

- American Automatrix
- Andover Controls
- Automated Logic
- Delta Controls
- Honeywell
- Invensys
- Johnson Controls
- KMC Controls
- Novar Controls/Alerton
- Siemens
- Trane
- Tridium

PAI directly minimizes an employee's time required to read, analyze, activate and create work orders for alarms. The action is executed quickly therefore, reducing time and labor cost.

Optimum efficiency when handling preventive maintenance is another value PAI offers. Runtime triggers prevent a maintenance team from over or under maintaining equipment. Which equates to less downtime, a more efficient use of manpower and an increased life of HVAC equipment. Trend analysis from work order history provides valuable information to implement predictive maintenance strategies.

PAI provides one-of-a-kind integration with BAS environments to help facilities around the world achieve cost-effective maintenance management.



Over 18 years of
Service Excellence!

Over 18 years of
Service Excellence!



Specifications

ProTeus Alarm Interface (PAI) is a device instance, running as a client, facilitating receipt of alarms from selected objects. Configured alarms are sent to ProTeus CMMS for automated work order generation based on pre-determined tasks. PAI supports both Algorithmic Change and Intrinsic Reporting.

PAI Requirements

- A third party software is used for BACnet communications using BACnet/IP or ISO 8802-3 (Ethernet). Manual configuration for binding to Ethernet adapter is required.
- The Alarm Manager or Alarm Configuration programs cannot be installed on the same workstation with other programs that will also be communicating on BACnet.
- PAI implementation requires setup and configuration by trained system integrators.

PAI BACnet Services Supported

Identifies conformance to ANSI/ASHRAE Standard 135-2001 (Annex K) for BACnet Interoperability Building Blocks (BIBBs)

- DS-RP-A. The A device is a user of data from device B
- AE-N-A. The device processes notifications about alarms and other events
- DM-DDB-A. The device seeks information about device attributes of other devices and interprets announcements.
- DM-DDB-B. The device provides information about its device attributes and responds to requests to identify itself.

Supported Objects

There are no objects supported within the PAI device. This list identifies the objects of vendors' devices that are configurable to PAI.

- Analog Input
- Analog Output
- Analog Value
- Binary Input
- Binary Output
- Binary Value
- Multi-State Input
- Multi-State Output
- Multi-State Value
- Event Enrollment

Vendor Requirements

- Vendor device compatibility with ANSI/ASRAE standard 135-2001.
- Support Intrinsic or Algorithmic Change Reporting.
- Support BACnet/IP or ISO 8802-3 (Ethernet) protocol.
- Support ANSI X3.4 Character Set
- Software capable of registering PAI device ID as a recipient for event notification. Eagle does not provide this function.



Eagle

Technology

10500 N. Port Washington Road • Mequon, Wisconsin 53092 USA
Phone: 1 (800) 388-3268 • 1 (262) 241-3845
Email: sales@eaglecmms.com • www.eaglecmms.com

© 2005 Eagle Technology, Inc. All rights reserved. Eagle Technology has a policy of continuous product improvement, it reserves the right to change specifications and design without notice. Rev 050203.

