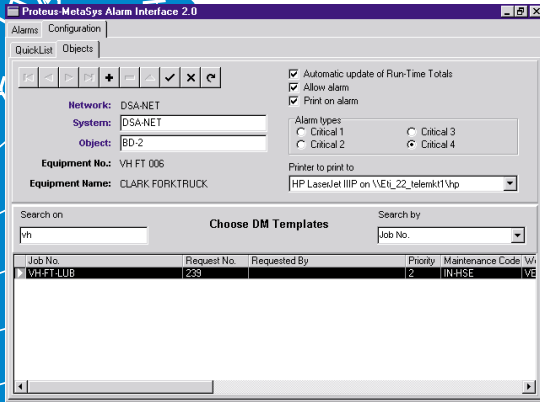


ProTeus IV

The CMMS Technology Leader



Metasys Interface



The Metasys Interface module provides a real-time link between ProTeus and Johnson Controls' Metasys® Building Automation System. The interface streamlines MRO operations in several ways:

Using the runtime data from Metasys, ProTeus establishes effective Preventive Maintenance schedules for connected equipment.

Features

- Automatically activate, print, page or email work order details with just a click.
- Ideal for facilities searching for a seamless facility maintenance management solution.
- Visit our web site for a complete slideshow presentation of the Metasys Interface module. Visit www.eaglecmms.com

©2004 Eagle Technology, Inc. All rights reserved. Eagle Technology has a policy of continuous product improvement, it reserves the right to change specifications and design without notice.

The Interface also allows Demand Maintenance work orders to generate automatically whenever a piece of equipment goes into alarm.

Add the ProTeus Service Request Module, and you can even notify technicians of emergency service requests via email or pager.

Eagle
Technology

Eagle Technology, Inc.
10500 N. Port Washington Road
Mequon, WI 53092 USA
1-800-388-3268 1-262-241-3845
Fax: 1-262-241-5248
E-mail: sales@eaglecmms.com
Web: www.eaglecmms.com